

Tinytag Explorer: Software for Tinytag Data Loggers

temperature » relative humidity » CO₂ » power usage » voltage » current » count

Tinytag Explorer software – an easy to use Windows program – is used to configure Tinytag data loggers and to display recorded data. Tinytag Explorer is quick to set up, simple to use, and versatile in terms of how recorded data is presented. It is supplied on a site licence allowing installation on multiple computers at the same location.



- Set up loggers and present recorded data
- Copy/export data into popular packages: e.g. MS Excel; Word
- Multi-language support
- Site licence
- Easy to use and flexible

Connection

Loggers are connected to the PC running the software via a USB cable or inductive pad, or across a LAN connection depending on the type of logger being used. For applications with remote data access via a network using Tinytag Radio and LAN loggers, Tinytag Explorer Connect, an enhanced version of the software is required.

Easy to Use

Tinytag Explorer is designed to be user-friendly: there is a fully illustrated Help File and an accompanying Quick Start Guide.

Once the software is installed, data loggers can be configured. An initial Basic Settings view enables a description for the logging run to be entered, and the logging interval set: that is, the time between each reading. Using the Advanced Settings, users can access various start and stop options, can choose to turn on minimum and maximum readings, and program a logger to show alarm indications when user-defined parameters are exceeded. Once set up is complete, the logger is started and left to record as required.

Working With Multiple Data Loggers

Tinytag Explorer is supplied with the Bulk Logger Tool, an additional application for working with a number of loggers simultaneously. This enables them to be started, stopped, downloaded, and current readings viewed at the same time, reducing the time needed to manage multiple units. The first data logger is configured and then successive units of the same type are programmed with the same settings. The configuration only has to be entered once. Loggers can be programmed or offloaded in turn, or multiple loggers can be worked with by connecting multiple cables or inductive pads to a computer using a USB hub.

Data Download

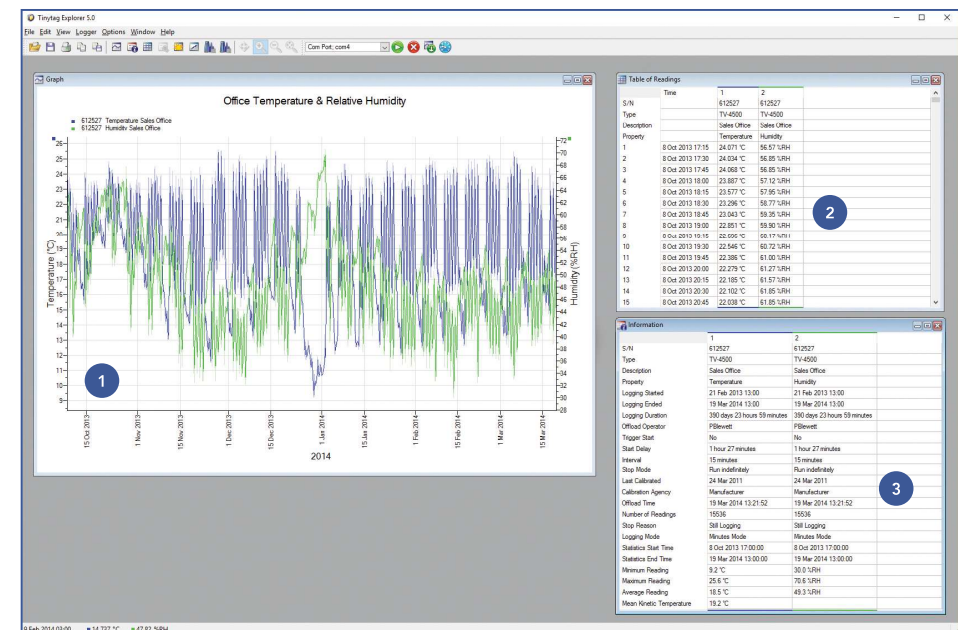
At the end of the monitoring period, the logger can be downloaded. Data is initially displayed as a graph that automatically scales itself to a suitable range for what has been recorded. Data can also be displayed as a table of readings, as summary information, and a table of daily minimum and maximum readings. These views are all linked, and will automatically update as the zoom range of the graph is changed.

To present an integrated view of conditions, data from multiple loggers or consecutive logging runs can be combined into the same graph using an overlay feature. For example this could combine data from a temperature logger and a CO₂ logger into one graph.

Data can be exported in Txt, CSV, Excel and XML formats; or by using copy and paste, for use in other programs. Graphs can be exported as images for use in reports, and the table of readings and summary views can be exported as tables for use in a spreadsheet or a third-party database.

Tinytag Explorer Software: Understanding the Data

Recorded data is clearly presented in graphs and tables, and as summary information.



- 1 Graph view: zoom function enables more detailed viewing of interesting data
- 2 Table of readings view: displays logger readings at the pre-set time intervals
- 3 Information view: shows logger properties and recording history

Tinytag Explorer requires a PC with the following specification:

Operating System: Windows, 7, 8, 8.1 or 10 (x86 & x64 versions)

Browser: Internet Explorer 8 (or above); Firefox or Google Chrome

Processor: 200MHz Pentium III processor or better (1.6GHz recommended)

Memory: 512Mb (1024Mb recommended for Windows 7 & above)

Hard Disk Space: At least 30Mb available hard disk space (120Mb recommended)

Monitor: Minimum 256 colours, resolution 800 x 600 (15" Monitor with 16 bit colour, 800 x 600 resolution or greater recommended)

Find out more about Tinytag Explorer in a five minute video on our website www.gemindataloggers.com/software