

EVENT101A

EVENT DATA LOGGER



Features

- 10 Year Battery Life
- 4 Hz Reading Rate
- Multiple Start/Stop Function
- Ultra High Speed Download
- 406,323 Events Storage Capacity
- Memory Wrap
- Battery Life Indicator
- Optional Password Protection
- Field Upgradeable

Benefits

- Simple Setup and Installation
- Minimal Long-Term Maintenance
- Long-Term Field Deployment

Applications

- Monitoring Gas, Water or Electric Meters
- Rainfall Monitoring
- Contact Closure Monitoring
- Time Studies
- Traffic Studies



Choose the Event101A data logger to monitor and record the occurrences of a specific event. With limitless possibilities, this dynamic device can be used for applications ranging from time or traffic studies, or used in conjunction with a rain gauge for rainfall monitoring. The Event101A has up to a 10 year battery life, making it ideal for long term field studies and is a common solution for monitoring gas, water or electric meters.

The Event101A offers an input range of up to 30 V, a reading rate of 4 Hz and a storage capacity of over 400,000 readings with ultra-high speed data download capability. Using the MadgeTech Data Logger Software, the Event101A can be also be configured to utilize the memory wrap option to extend deployment capability or program the device for delayed start up to 18 months in advance.

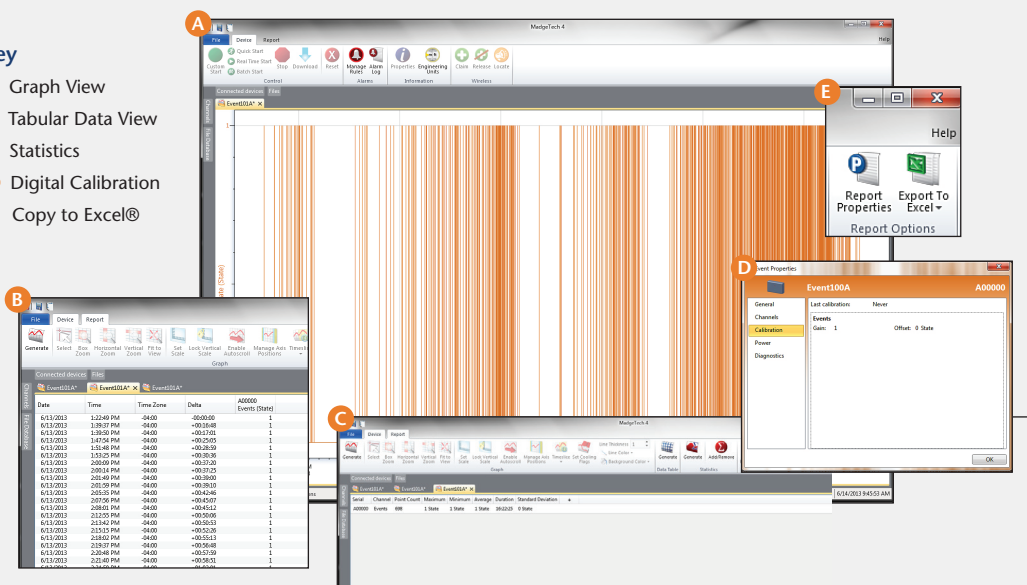
The terminal block on the Event101A conveniently disconnects from the data logger to retain any wiring connectivity while retrieving the device for data downloads.

Collected data can be downloaded to the software and viewed in graphic, tabular, and summary form. Engineering Units can also be configured to display readings in the desired units automatically. Once downloaded, data can also be exported to Excel for further custom reporting.

MADGETECH DATA LOGGER SOFTWARE

Key

- A** Graph View
- B** Tabular Data View
- C** Statistics
- D** Digital Calibration
- E** Copy to Excel®

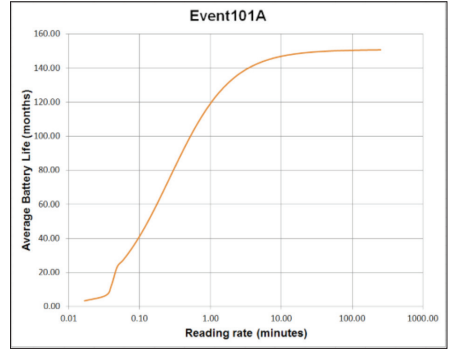


Software Features:

- Multiple graph overlay
- Statistics
- Digital calibration
- Zoom in/ zoom out
- Lethality equations (F0, PU)
- Mean Kinetic Temperature
- Full time zone support
- Data annotation
- Min./Max./Average lines
- Data table view
- Automatic report generation
- Summary view
- Multilingual

EVENT101A SPECIFICATIONS*

| | |
|---|--|
| Input Connection: | Removable screw terminal |
| Input Range: | 0 V to 30 V |
| Input Low: | <0.4 V |
| Input High: | >2.8 V |
| Internal Weak Pull-Up: | <60 μ A |
| Input Impedance: | >60 k Ω |
| Minimum Input Active (Low) Time: | 10 Microseconds |
| Time Resolution: | 4 Hz (<i>reading rate selectable in software</i>) |
| Reading Rate**: | 4 Hz up to 1 reading every 24 hours |
| Memory: | 406,323 readings; software configurable memory wrap |
| Wrap Around: | Yes |
| Start Modes: | Immediate start • Delay start up to 18 months • Multiple pushbutton start/stop |
| Multiple Start/Stop Mode: | Start and stop the device multiple times without having to download data or communicate with a PC |
| Stop Modes: | • Manual through software • Timed (specific date and time) |
| Multiple Start/Stop Mode Activation: | To start the device: <i>Press and hold the pushbutton for 5 seconds, the green LED will flash during this time. The device has started logging.</i> To stop the device: <i>Press and hold the pushbutton for 5 seconds, the red LED will flash for three seconds and then the green LED will flash for two seconds. The device has stopped logging.</i> |
| Real Time Recording: | The device may be used with PC to monitor and record data in real-time |
| LED Functionality: | Green LED blinks: <i>10 second rate to indicate logging 15 second rate to indicate delay start mode</i> Red LED blinks: <i>10 second rate to indicate low battery and/or full memory</i> |

| | |
|-------------------------------|--|
| Password Protection: | An optional password may be programmed into the device to restrict access to configuration options. Data may be read out without the password. |
| Engineering Units: | Native measurement units can be scaled to display measurement units of another type such as on/off, open/closed or rainfall. |
| Battery Type: | 3.6V lithium battery included; user replaceable |
| Battery Life: | 10 years typical, dependent upon frequency and duty cycle.  <p>Graph display of the device recording in a 25 °C environment.</p> |
| Time Accuracy: | ±1 minute/month (at 20 °C/68 °F, stand alone data logging) |
| Computer Interface: | USB (interface cable required); 115,200 baud |
| Software: | XP SP3/Vista/Windows 7/Windows 8 |
| Operating Environment: | -40 °C to +80 °C (-40 °F to +176 °F), 0 %RH to 95 %RH non-condensing |
| Dimensions: | 1.4 in x 2.2 in x 0.6 in (36 mm x 56 mm x 16 mm) |
| Weight: | 0.9 oz (24 g) |
| Materials: | ABS Plastic |
| Approvals: | CE |

BATTERY WARNING: FIRE, EXPLOSION, AND SEVERE BURN HAZARD. DO NOT RECHARGE, DISASSEMBLE, HEAT ABOVE 212 °F, INCINERATE OR EXPOSE CONTENTS TO WATER.

*SPECIFICATIONS ARE SUBJECT TO CHANGE WITHOUT NOTICE. SPECIFIC WARRANTY AND REMEDY LIMITATIONS APPLY. CALL 1-603-456-2011 OR GO TO WWW.MADGETECH.COM FOR DETAILS.

**Device will record 1 event per reading interval.

ORDERING INFORMATION

| MODEL | DESCRIPTION |
|-----------|--|
| EVENT101A | Event Data Logger |
| IFC200 | Software, manual and USB interface cable |
| LTC-7PN | Replacement battery for Event101A |

ASK ABOUT
OUR OTHER
DATA
LOGGERS

Temperature
 Humidity
 Pressure
 pH
 Level
 Shock
 LCD Display
 Pulse/Event/State
 Current
 Voltage
 Wireless
 Intrinsically Safe
 Spectral Vibration
 Motion

For Quantity Discounts call 603-456-2011 or email sales@madgetech.com