

# RHTEMP2000

## HUMIDITY & TEMPERATURE DATA LOGGER W/LCD DISPLAY



### Features

- Large, backlit LCD display
- Front keypad w/lock feature
- User-selectable measurement units
- Simultaneous display of temperature and humidity
- Min./max. & average statistics
- Programmable start/stop time
- Convenient status indicators
- User replaceable battery and external power
- Wall mountable

### Applications

- Remote data logging
- Warehouse monitoring
- HVAC
- Medical and Pharmaceutical
- Museum monitoring
- Environmental studies
- Implement HACCP programs
- Refrigeration
- Mineral Processing
  - Electrostatic Separation

The RHTemp2000 is perfect for applications requiring instant remote readings of environmental parameters, including temperature and humidity.

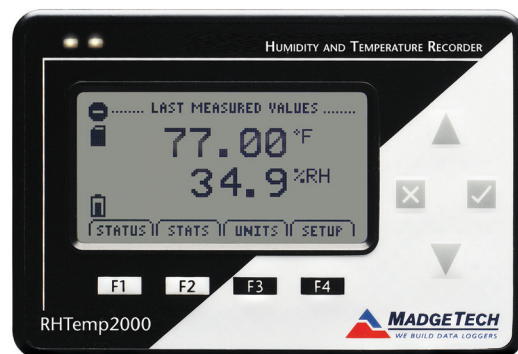
The 8-button keypad and large LCD provide convenient access to current data and recorder setup. Additionally, memory and battery levels, external power status, and sampling and recording status are shown on the LCD.

Available on-screen data includes: statistics (min, max, average) for all two channels; recording status (start, stop and recording rate); display options (channels shown, units, text size); and calibration information (date calibrated, date for recalibration). Statistics can be cleared at any time during logging.

With 131,071 readings per channel, the RHTemp2000 has one of the largest memory capacities of any similar data recorder on the market. The non-volatile memory will retain recorded data, even if AC and battery power are lost.

The RHTemp2000 runs on a 9V battery with a typical battery life of 1 year, at a 1 min reading rate with the display off. With continuous LCD and no backlight usage, the average battery life is 30 days. For power savings, both the LCD and backlight have configurable auto-off options. Those wanting to keep the LCD display and backlight continuously active need only to connect the unit to an AC power supply, keeping the 9V battery connected as a back-up.

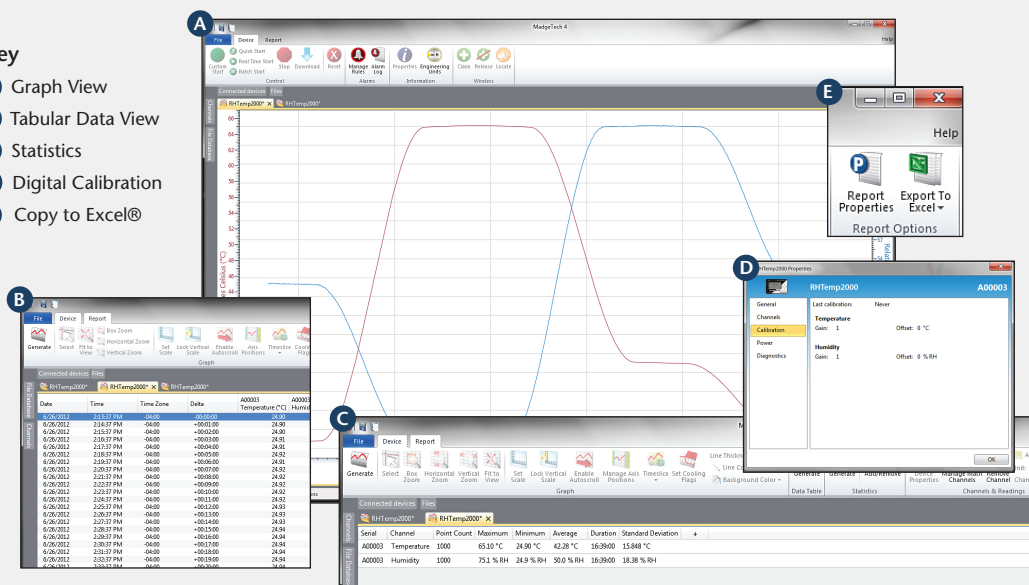
a calibration certificate is available for users needing to meet regulatory requirements. Creating permanent records, performing data calculations, and the graphing of data is quick and easy: Simply connect the interface cable to an available USB port and, with a few clicks of the mouse, data is downloaded and ready for review or export to Excel®.



## MADGETECH DATA LOGGER SOFTWARE

### Key

- A** Graph View
- B** Tabular Data View
- C** Statistics
- D** Digital Calibration
- E** Copy to Excel®



### Software Features:

- Multiple graph overlay
- Statistics
- Digital calibration
- Zoom in/ zoom out
- Lethality equations (F0, PU)
- Mean Kinetic Temperature
- Full time zone support
- Data annotation
- Min./Max./Average lines
- Data table view
- Automatic report generation
- Summary view
- Multilingual

# RHTEMP2000 SPECIFICATIONS\*

\*SPECIFICATIONS ARE SUBJECT TO CHANGE WITHOUT NOTICE. SPECIFIC WARRANTY REMEDY LIMITATIONS APPLY. CALL 1-603-456-2011 OR GO TO [WWW.MADGETECH.COM](http://WWW.MADGETECH.COM) FOR DETAILS.

## TEMPERATURE

<b>Range:</b>	-20 °C to +60 °C
<b>Resolution:</b>	0.1 °C
<b>Calibrated Accuracy:</b>	±0.5 °C (0 °C to +50 °C)

## HUMIDITY

<b>Range:</b>	0 %RH to 95 %RH
<b>Resolution:</b>	0.1 %RH
<b>Calibrated Accuracy:</b>	±3 %RH (±2 %RH typical at 25 °C)
<b>Specified Accuracy Range:</b>	+10 °C to +40 °C, 10 %RH to 80 %RH

## DOT-MATRIX LCD

<b>Dimensions:</b>	2.5 in x 1.375 in (63 mm x 35 mm)
<b>Text:</b>	Configurable channel text size
<b>Indicators:</b>	Power, status, memory
<b>Backlight:</b>	Configurable w/auto shut-off and contrast adjustment

**BATTERY WARNING:** MAY LEAK AND/OR FLAME IF OPENED, RECHARGED, CONNECTED IMPROPERLY, OR DISPOSED OF IN FIRE.

<b>Start/Stop Time:</b>	Software programmable start time and date, up to six months in advance; programmable stop time
<b>Memory:</b>	131,071 readings per channel; 262,143 total readings; software configurable memory wrap
<b>Reading Rate:</b>	1 reading every 2 seconds up to 1 reading every 24 hours
<b>Calibration:</b>	Digital calibration through software
<b>Calibration Date:</b>	Automatically recorded within device
<b>Battery Type:</b>	9V lithium battery included, <b>user replaceable</b> ; optional AC adapter
<b>Battery Life:</b>	1 year battery life at 1 min reading rate with display off. 30 days typical with continuous LCD and no backlight usage.
<b>Unit Display:</b>	Date and time stamped °C, °F, K, °R ; %RH, mg/ml water vapor concentration, dew point
<b>Time Accuracy:</b>	±1 minute/month (at 20 °C to 30 °C)
<b>Computer Interface:</b>	USB (interface cable required); 115,200 baud
<b>Software:</b>	XP SP3/Vista/Windows 7/Windows 8
<b>Operating Environment:</b>	-20 °C to +60 °C, 0 %RH to 95 %RH non-condensing
<b>Dimensions:</b>	4.8 in x 3.3 in x 1.25 in (122 mm x 84 mm x 32 mm)
<b>Weight:</b>	16 oz (440 g)
<b>Enclosure:</b>	Black anodized aluminum
<b>Approvals:</b>	CE

## ORDERING INFORMATION

MODEL	DESCRIPTION
<b>RHTEMP2000</b>	Humidity and Temperature Recorder w/LCD Display
<b>IFC200</b>	Software, manual and USB interface cable
<b>Calibration Certificate</b>	Calibration Certificate available for data logger
<b>U9VL-J</b>	Replacement battery for RHTemp2000

ASK ABOUT  
OUR OTHER  
DATA  
LOGGERS

Temperature  
Humidity  
Pressure  
pH  
Level  
Shock  
LCD Display  
Pulse/Event/State  
Current  
Voltage  
Wireless  
Intrinsically Safe  
Spectral Vibration  
Motion

For Quantity Discounts call 603-456-2011 or email [sales@madgetech.com](mailto:sales@madgetech.com)