



Whatever means of transportation,  
**SPY** mobility

ensures a comprehensive monitoring of your product,  
 from shipment to delivery.

A solution designed for all means of transportation from simple shipment of a refrigerated case to long range transport of sensitive goods by air or sea.

SPY mobility is a **temperature recorder** which allows the **geolocation of the monitored thermo-sensitive products** during transportation.



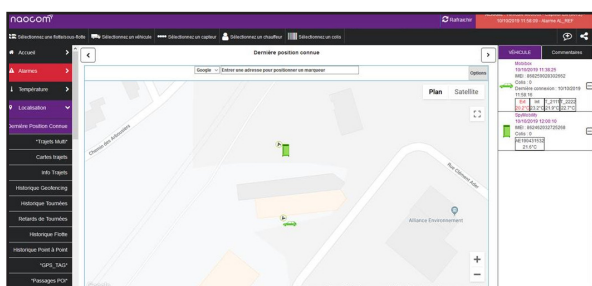
In case of temperature excursions, **real-time alarm notifications are sent to different receivers by email or sms/text message** to perform corrective actions and save your goods.

Data are transferred to the cloud and can be managed on a secured platform via smartphone, tablet or PC.

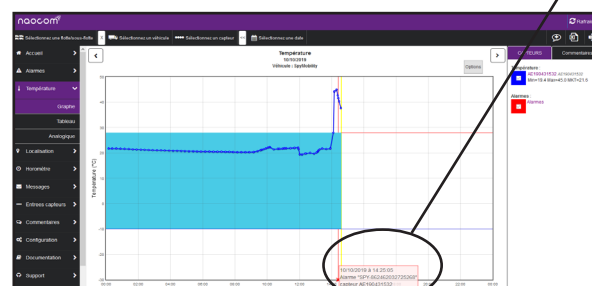
**An intuitive web interface** to monitor the temperature of your thermo-sensitive products during the shipment and to locate them in real-time on a map.



Non contractual picture



Current position of vehicle fleet  
 View information by vehicle

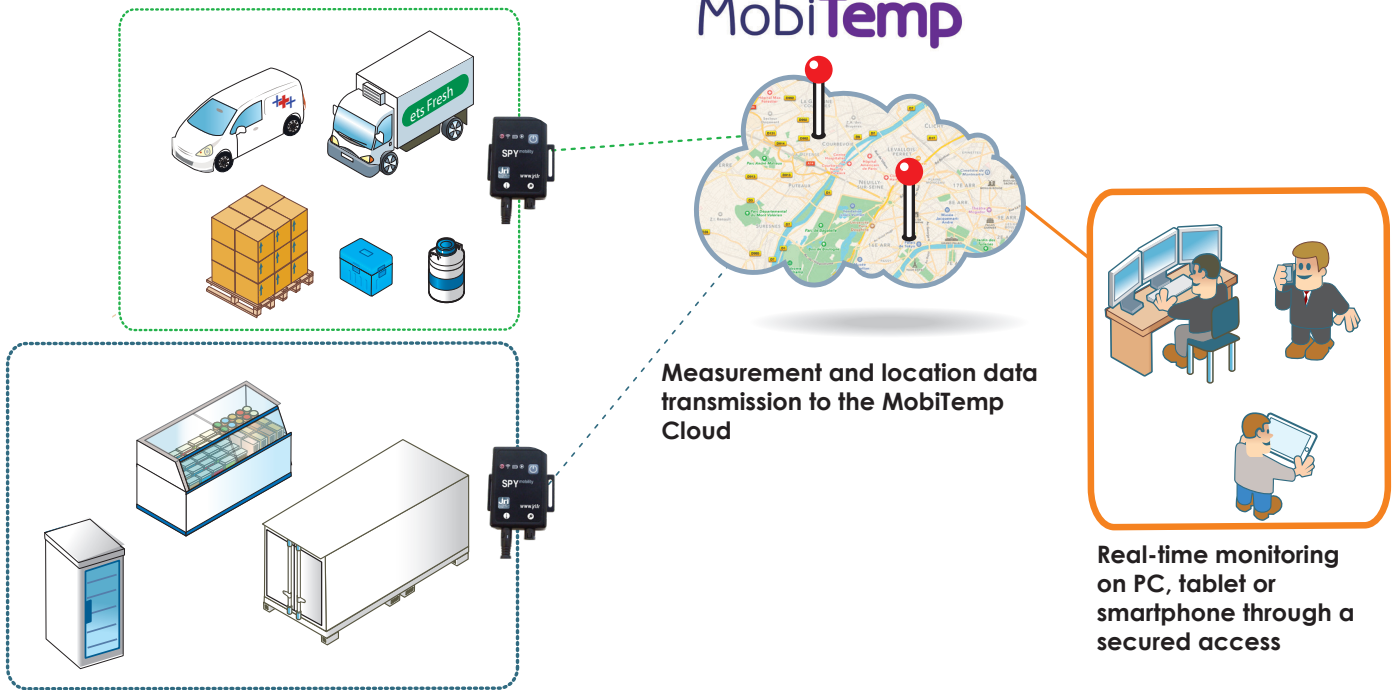


Display of temperature curves and parameter thresholds  
 Information on alarms identified

Alarm



## Operating principle



Real-time temperature and location measuring and recording of your thermo-sensitive products in :

- Refrigerated vehicle
- Pallet of goods
- Isothermal box
- Cryogenic tank
- Refrigerated container
- Refrigerated display cabinet, ...

## Technical features

SPY mobility is composed of a **GPS/GPRS device** and a **5<sup>th</sup> generation digital probe with high metrological quality** to meet the requirements for monitoring thermo-sensitive products.

The ISO 17025 calibration of the probe can be performed by **a simple exchange, without interruption of monitoring.**

### GPRS transmission device

- GPS : 12 GPS channels SIRF IV A-GPS included  
Accelerometer 3D - Sensitivity : <1mg
- GPRS Modem
- Location : Outdoor GPS / GSM
- Operating conditions :  
Standard model : -20°C to +60°C  
Long battery life model : -40°C to +60°C
- Certifications : CE 007 - RTTE RoHS - EN 12 830\*
- Storage : 10 000 measurements
- Leds function : Module activated  
GPRS transmission  
Power supply  
Alarm
- Battery-powered\*\* :  
Standard model : 12 days  
Long battery life model : 50 days  
or mains powered models available
- Dimensions :  
Standard model : 89x59x25 mm  
Long battery life model : 89x59x37,5 mm

### 5<sup>th</sup> generation digital probe

- Measurement range :  
T : -196°C to +80°C (depending on the probe)  
T/RH : -30°C to +70°C / 0% to 100% RH
- Type of sensor : Digital
- Memory : Internal - Metrological information saved inside
- Models : Temperature  
Ultra-low temperature  
Temperature / Hygrometry

### Probes images



\*Long battery life model only

\*\*With a measure every 15mn and a data transmission on the MobiTemp Cloud every 6hrs

More information, contact us at +33 3 81 30 68 04 or [info@group-mms.com](mailto:info@group-mms.com)