

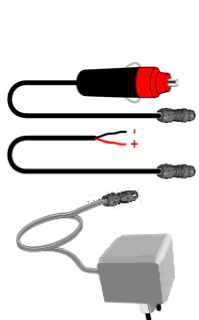
1 Presentation of devices

SPY mobility Beacon

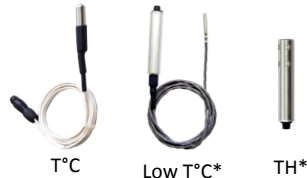


2 models available:
 - **Standard Model:**
 89x59x25mm
 - **Long-Life Model:**
 89x59x37.5mm

Power Supply (options)



Probe Types

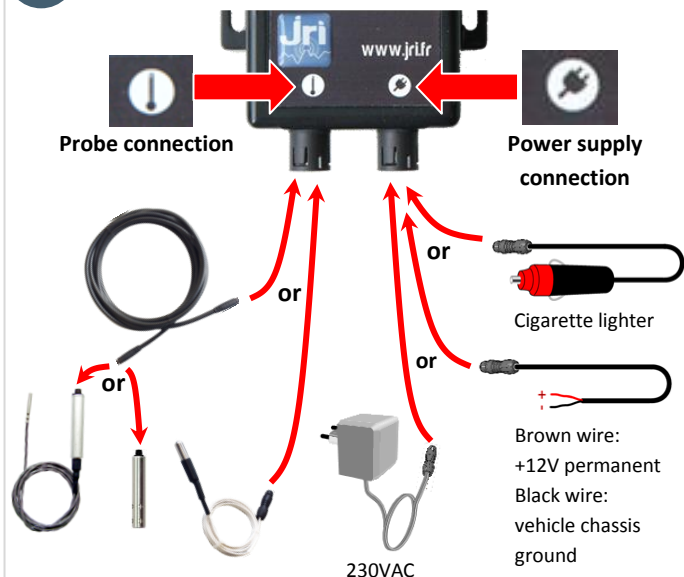


*extension cable mandatory

Probe Extension Cable Types



2 Connections and Implementation



- **Reloading and updating**
 Switch off the SPY Mobility and then power it to charge the internal battery. Turn it on again after a few minutes. If there is an available update, it will be done.
- **Autonomy** : 10 to 40 days * of autonomy depending on the model. It can also work plugged

* On the default setting (1 measurement every 15 minutes and upload data to SIRIUSmobility cloud every 3 hours.)

3 Configuration and Use

Connect to www.siriusmobility.com using the user ID and password given to you by JRI. To configure your SPY mobility, consult the Online help accessible from the HELP menu located at the upper right of your screen.

MEANING OF INDICATOR LAMP

	State		Meaning
	Color	Lamp behavior	
Operating lamps 	Off	Off	Beacon off
	Blue	Slow flashing (0.1s every 2s)	Beacon operating (cpu, GSM or GPS active)
	Blue	Rapid flashing (0.1s every 4s)	Beacon operating (cpu, GPS and GSM on standby)
	Blue	Rapid flashing (0.1s every 0.5s)	Beacon shutting down
Communication lamps 	Blue	Continuous 2s	Brief pressure on the detected button
	Off	Continuous	GSM off
Charging lamps 	Blue	Lit	Connected to GPRS network or data exchange in progress
	Off	Continuous	Unit off
	Yellow	Rapid blinking (0.5s every 1s)	Autonomous mode: charge level correct
	Yellow	Rapid flashing (0.1s every 1s)	Unit under power: charging in progress
Alarm lamps 	Yellow	Continuous	Autonomous mode: insufficient charge
	Yellow	Continuous	Charging terminated and unit under power
	Off	Off	Absence of temperature alarm
	Orange	Slow blinking (1s every 5s)	Pre-alarm in progress for a duration less than the timeout value
	Orange	Continuous	Pre-alarm in progress for a duration exceeding the timeout value
	Red	Slow blinking (1s every 2s)	Critical alarm in progress for a duration less than the timeout value
Operating, charging, alarm and communication lamps	Red	Continuous	Critical alarm in progress for a duration exceeding the timeout value
	Red	Rapid flashing (0.1s every 1s)	Probe absent
	Red, Blue, yellow and blue	Alternating lighting of each lamp	Unit initialization in progress
	Red, Blue, yellow and blue	Continuous	Pressure on button exceeding 3 seconds detected
Push button 	Press continuously (3 seconds), until all lamps light		Unit power on Unit power off
	Press briefly while the unit is powered on		Start cycle of measurement, of positioning and of transmission of data to server

