



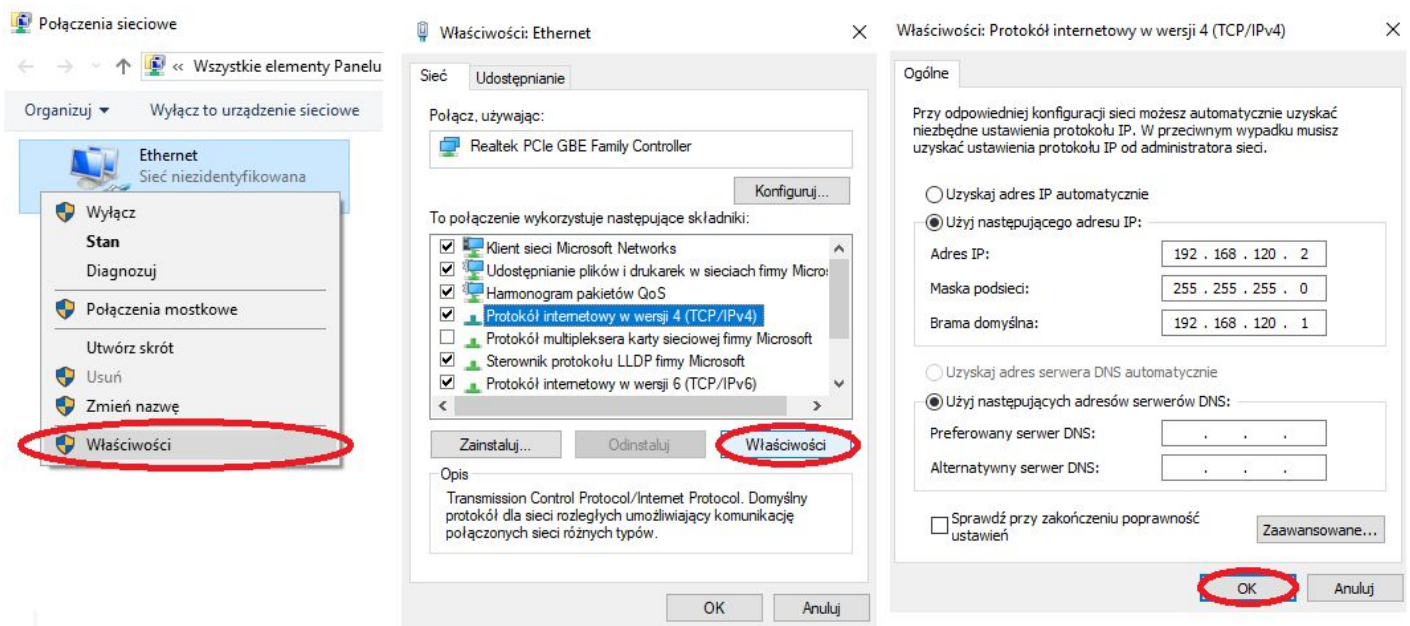
# EFENTO GATEWAY

Quick start

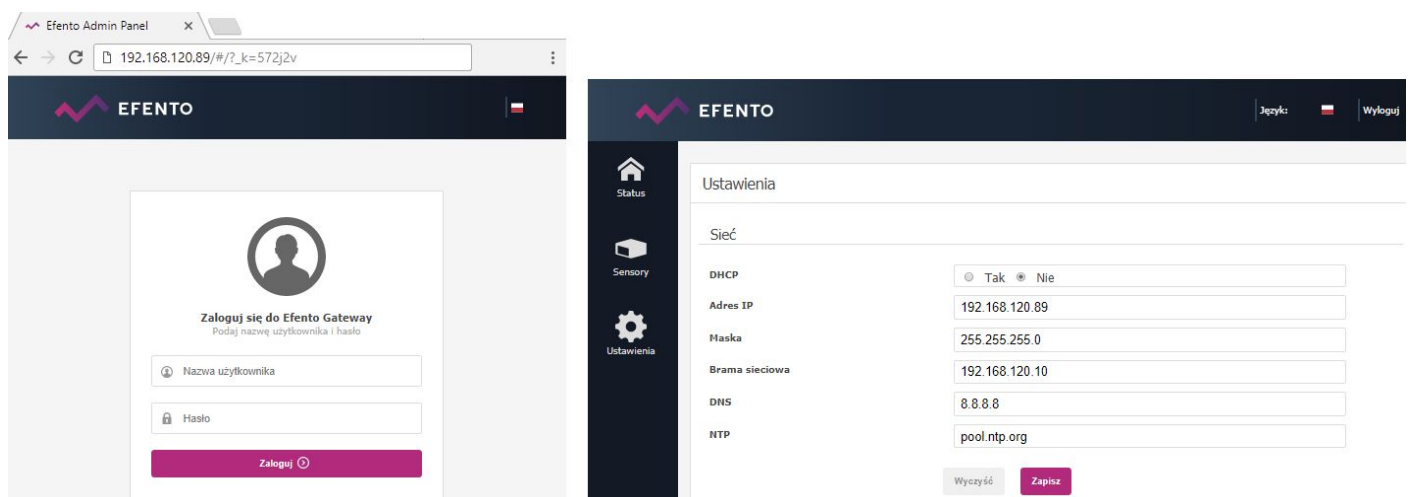
V 2.0

26.09.2019

1. Connect the Efento Gateway device to the computer with an RJ45 cable and power supply.
2. Change network card settings. To do this, go to the **Control Panel**, choose **Network and Sharing Center** and from the menu on the left side of the window choose **Change adapter settings**. From network connections, select the connection icon, e.g. (**Ethernet or Local Area Connection**), and next change the **IPv4 settings** as shown below:



3. In the web browser, type address **192.168.120.89** (the default Efento Gateway address). Log in to the configuration panel of Efento Gateway (login: **admin** password: **admin**) and go to the **Settings** tab.
4. Change network settings: set **new address IP** so that the device can work on your target network. Accept changes with the "Save" button.

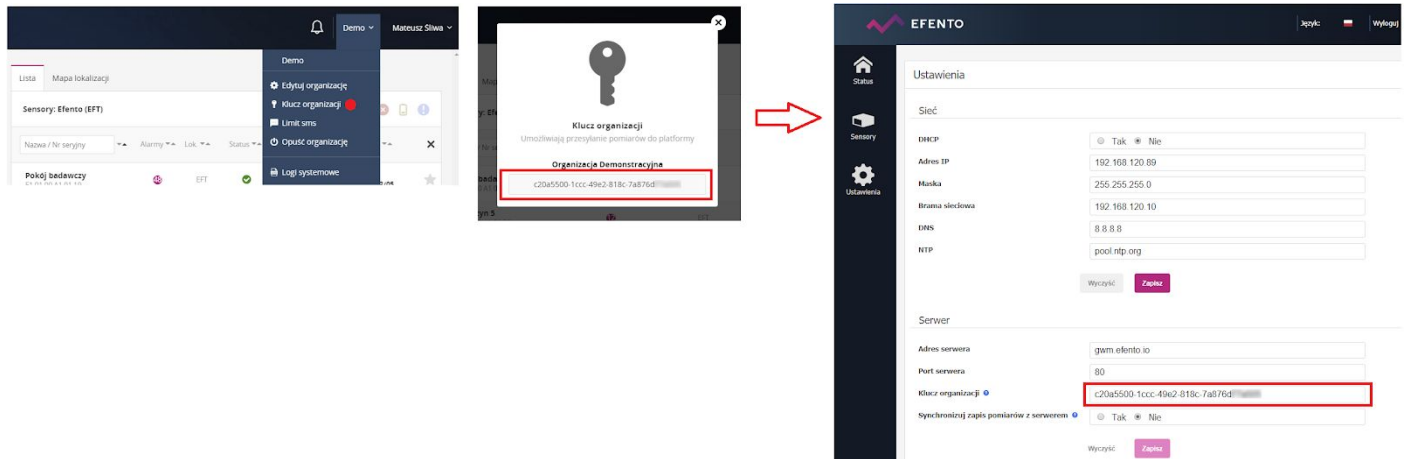


5. Connect Efento Gateway to the switch / router in the target network.

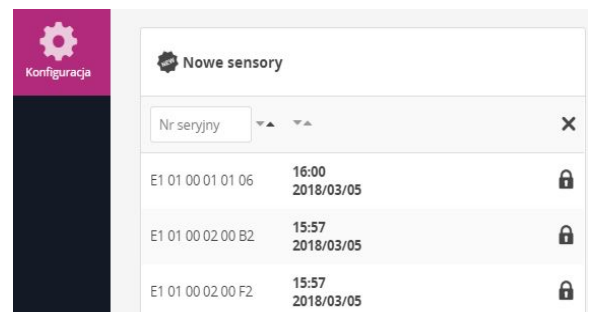
6. Log in to the Efento Gateway configuration panel by entering the **newly assigned IP address** in the browser, go to the **Settings** tab.

7. In the second browser card, log in to the Efento Cloud platform - address: <https://cloud.efento.io> and register an account according to the displayed instructions.

8. After logging in to the platform, read the organization key and copy it to the "Organization key" field in the "Settings" tab in the Efento Gateway configuration panel (**point 7**)



9. Measurements from sensors will be sent to the Efento Cloud platform, new sensors will appear in the Configuration tab with a padlock icon. To add a sensor to the organization, press the padlock icon next to the serial number of the sensor and enter the appropriate Cloud Key.



**Important:** The device can be restored to the factory settings by pressing and holding, for example, the pen or needle on the button back of the device. When the LEDs start to flash, release the button and wait about 1 minute until only one LED lights up. After this operation, the device will have a factory IP address (192.168.120.89).

**A video presenting the installation and configuration of Efento Gateway:**

<https://www.youtube.com/watch?v=KuyzQdWRW2Q&feature=youtu.be>